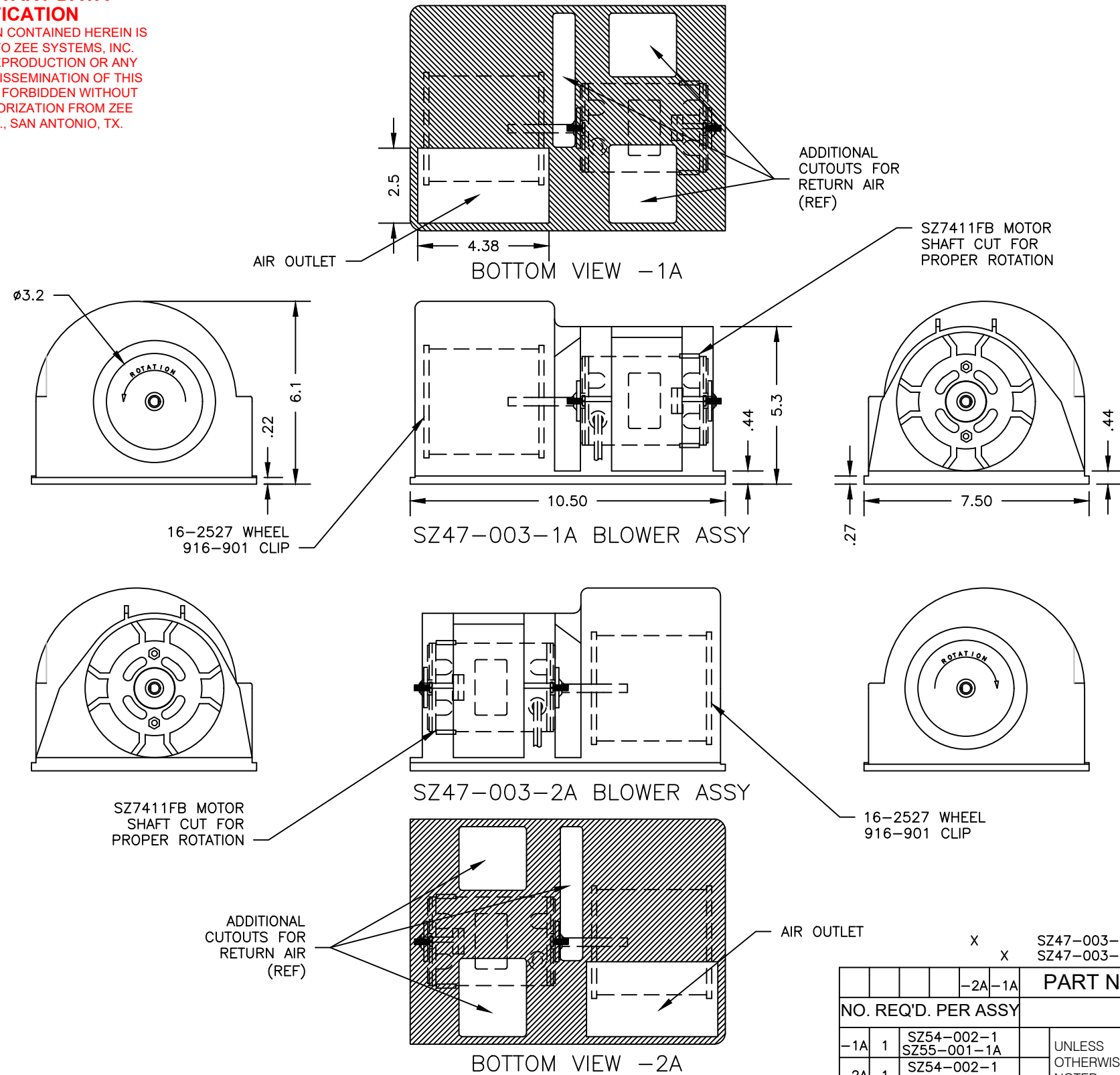


**PROPRIETARY DATA
NOTIFICATION**

THE INFORMATION CONTAINED HEREIN IS PROPRIETARY TO ZEE SYSTEMS, INC. DISCLOSURE, REPRODUCTION OR ANY OTHER USE OR DISSEMINATION OF THIS INFORMATION IS FORBIDDEN WITHOUT WRITTEN AUTHORIZATION FROM ZEE SYSTEMS, INC., SAN ANTONIO, TX.

LIST OF REVISIONS

REV	DESCRIPTION	DATE	APPVD
IR	INITIAL RELEASE	1-19-06	KJZ



SPECIFICATIONS:

DIMENSIONS AND SPECIFICATIONS FOR THE -1A AND -2A ARE IDENTICAL EXCEPT FOR FINAL ROTATION OF THE MOTOR AND THE BLOWER WHEEL.

1. CURRENT:	SPEED	VOLTAGE	AMPS	CONDITION
	HIGH	28VDC	7	UNRESTRICTED
	HIGH	28VDC	6	.4 H ₂ O STATIC
	MEDIUM	28VDC	4	.4 H ₂ O STATIC
	LOW	28VDC	2.5	.4 H ₂ O STATIC

2. AIR FLOW: 350 CFM (595 m³/H) ON HIGH UNRESTRICTED.

WEIGHT: 5.1 LBS. (2.3 kg).

NOTES:

- BREAK ALL SHARP EDGES.
- MARK PART IN ACCORDANCE WITH ZEE SYSTEMS, INC. PROCESS SPECIFICATION SZ-001.
- MOD C. WHEN USING THE SZ47-302-1 MOUNT MARK 'C' AT THE END OF THE SERIAL NUMBER.

		-2A-1A	PART NO.	NAME	STOCK SIZE	MATERIAL	MAT'L SPEC	
NO. REQ'D. PER ASSY								
-1A	1	SZ54-002-1 SZ55-001-1A	UNLESS OTHERWISE NOTED .X+/- .060 .XX+/- .030 .XXX+/- .010	DRAWN BY K.ZAIONTZ	1-19-06	TITLE BLOWER ASSY OUTLINE		
-2A	1	SZ54-002-1 SZ55-001-1A		CHECK				
				ENGR K.ZAIONTZ	1-19-06	DWG SIZE 11X17	SCALE 1/4	
						SHT 1 OF 1		
DASH NO.		NO. REQ'D PER ASSY	NEXT ASSY	MODEL	DWG NO. SZ47-003-OUTLINE			REV A
<p align="center">ZEE SYSTEMS, INC. 406 W. Rhapsody San Antonio, TX 78216 USA</p>								

ZEE SYSTEMS, INC.
ZEE SYSTEMS, INC.