



ZEE Systems, Inc.

SERVICE LETTER 47-003-2

1.0 EFFECTIVITY: All SZ47-003-1A and SZ47-003-2A Blower Assemblies that have incorporated SL47-003K.

2.0 PURPOSE: To provide instructions to return the Blower Assembly to the original configuration.

3.0 COMPLIANCE: Compliance is optional.

4.0 APPROVALS: This Service Letter brings the Blower Assembly to the original configuration no additional approvals are required. Replacement parts are FAA-PMA on the DHC-100/-200/-300.

5.0 WEIGHT AND BALANCE: No change from original configuration.

6.0 ELECTRICAL LOAD OR PERFORMANCE DATA: No change.

7.0 SPECIAL TOOLS: None.

8.0 MAN POWER REQUIREMENTS: 1.0 man hours to remove the defective motor and wheel and install the new motor and wheel in the blower housing. This estimate does not include removal from the aircraft and reinstallation and documentation.

9.0 INSTRUCTIONS:

9.1 Remove the 8 screws that hold the two blower housings together. Retain the screws for reassembly. Remove the Top Housing (17-2641). Note the spacing of the Blower Wheel in the Lower Housing (17-2642).

9.2 Remove the motor to be replaced. Note the spacing of the Blower Wheel on the shaft.

9.3 If a dual shaft SZ7411FB Motor is ordered you must determine the desired rotation and then cut off the opposite shaft. Refer to SL47-003-1 for instructions. After the shaft has been cut see Section 12.0 for marking instructions.

9.4 After the opposite shaft has been removed place 1 each Motor Support 17-2687 on each end of the motor. Secure with one NAS1149F0332P Flat Washer and one MS21083N3 Lock Nut on each of the four studs through the two 17-2687 Motor Supports. See FIG 1.



ZEE Systems, Inc.

SERVICE LETTER 47-003-2

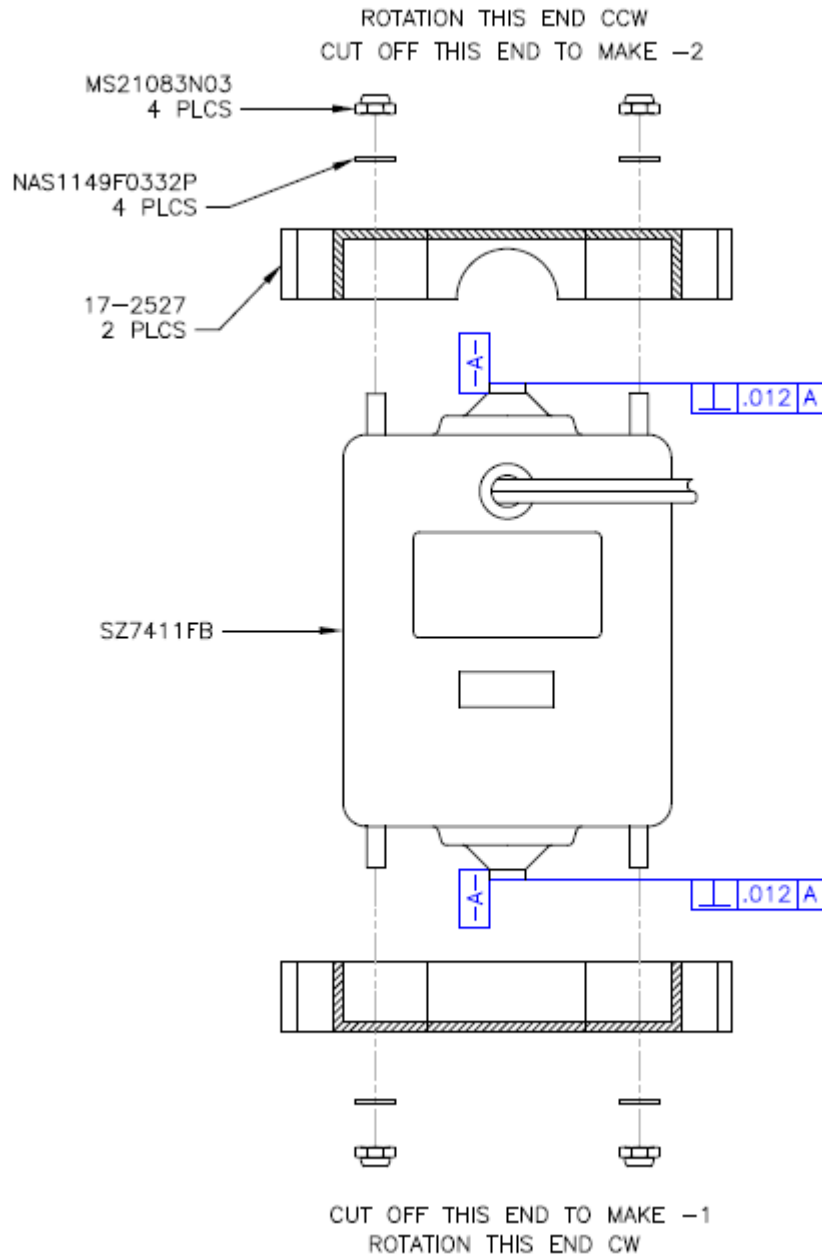


FIG. 1

9.5 The 16-2527 Blower Wheel rotation must match the rotation of the shaft. See FIG. 2 Push the Blower Wheel onto the shaft until you have the same spacing as the old wheel. Fit the motor and wheel into the Lower Housing (17-2642). Adjust the position of the wheel on the shaft so it does not touch the housing on either side. Adjust the spacing of the wheel on the shaft as necessary. When the proper spacing is achieved attach the 916-901 Clip on the Blower Wheel.



ZEE Systems, Inc.

SERVICE LETTER 47-003-2

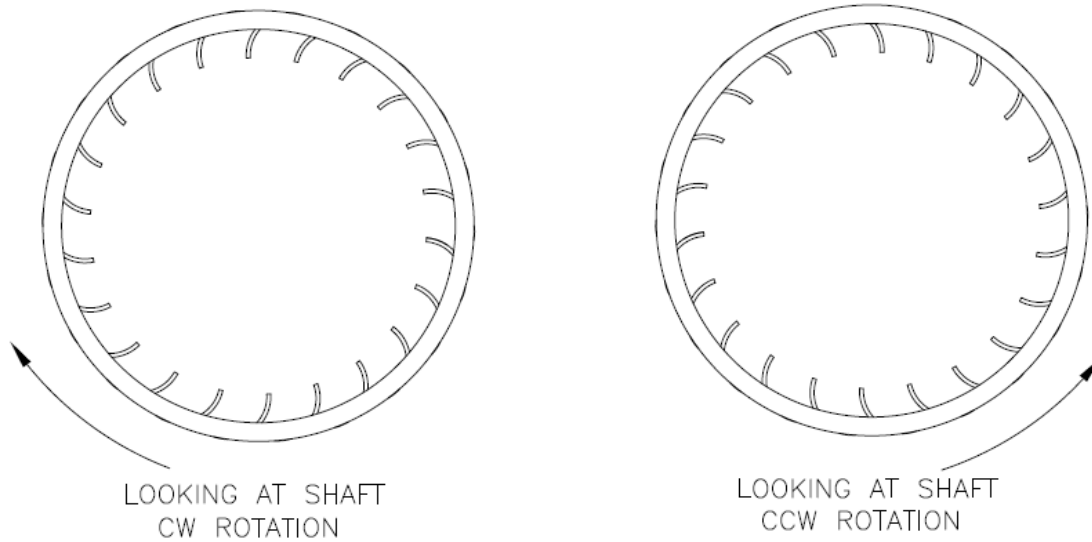


FIG. 2

9.6 Place the 17-2641 Top Housing on the 17-2642 Lower Housing and secure with the 8 screws.

10.0 REFERENCE MATERIAL: For downloadable documents visit:

www.zeeco-zeesys.com/Zee_Systems_Publications.htm

SL47-003-1

SL47-003K

SIL47-003B

11.0 TESTING: To test apply 28 VDC to the Blower Assembly. Run at each of the speeds. Check for binding, excessive noise, excessive current draw.

Black – Ground	CURRENT
Red – Low	3.25A ± .5A
Yellow – Medium	4.5A ± .5A
Orange – High	8.0A ± .75A

12.0 IDENTIFICATION: After the shaft has been cut to the proper rotation, on the motor I. D. Plate at the end of the part number mark as follows:

Motors with a clock-wise (CW) rotation mark **-2**.

Motors with CCW counter clock-wise (CCW) rotation mark **-1**.

13.0 RECORDS: Complete appropriate documents as required by governing civil aviation authority.



ZEE Systems, Inc.

SERVICE LETTER 47-003-2

14.0 MATERIAL COST and AVAILABILITY: Order Kit P/N: SZ47K003-2. Kit contains the following parts:

1ea SZ7411FB Motor

2ea 17-2687 Supports

1ea 16-2527 Blower Wheel

1ea 916-901 Clip

4ea MS21083N03 Nut, Lock

4ea NAS1149F0332P Washer, Flat

For Price and Delivery contact:

ZEE Systems, Inc.

T 800-988-2665

T 210-34209761

F 210-341-2609

info@zeeco-zeesys.com